



**REGIONAL SPECIALISED METEOROLOGICAL CENTRE-TROPICAL CYCLONES, NEW DELHI
TROPICAL WEATHER OUTLOOK**

DEMS-RSMC SPECIAL TROPICAL CYCLONES NEW DELHI DATED 09.11.2022

TROPICAL WEATHER OUTLOOK FOR NORTH INDIAN OCEAN (THE BAY OF BENGAL AND THE ARABIAN SEA) VALID FOR NEXT 120 HOURS ISSUED AT 0600 UTC OF 09.11.2022 BASED ON 0300 UTC OF 09.11.2022.

BAY OF BENGAL:

UNDER THE INFLUENCE OF THE CYCLONIC CIRCULATION OVER SOUTHWEST BAY OF BENGAL (BOB) & ADJOINING EQUATORIAL INDIAN OCEAN (EIO), A LOW PRESSURE AREA (LPA) HAS FORMED OVER THE SAME REGION AND THE ASSOCIATED CYCLONIC CIRCULATION EXTENDS UPTO 7.6 KM ABOVE MEAN SEA LEVEL. IT IS LIKELY TO BECOME MORE MARKED DURING NEXT 48 HOURS. IT IS VERY LIKELY TO MOVE NORTHWESTWARDS TOWARDS TAMILNADU- PUDUCHERRY COASTS DURING 09TH TO 12TH NOVEMBER, 2022.

SCATTERED TO BROKEN LOW AND MEDIUM CLOUDS WITH EMBEDDED INTENSE TO VERY INTENSE CONVECTION LAY OVER EASTCENTRAL & SOUTH BOB AND NORTH ANDAMAN SEA. SCATTERED LOW AND MEDIUM CLOUDS WITH EMBEDDED MODERATE TO INTENSE CONVECTION LAY OVER WESTCENTRAL BOB, SOUTH ANDAMAN SEA AND ISOLATED WEAK CONVECTION LAY OVER NORTH BOB.

PROBABILITY OF CYCLOGENESIS (FORMATION OF DEPRESSION) DURING NEXT 120 HRS:

24 HOURS	24-48 HOURS	48-72 HOURS	72-96 HOURS	96-120 HOURS
NIL	NIL	NIL	NIL	NIL

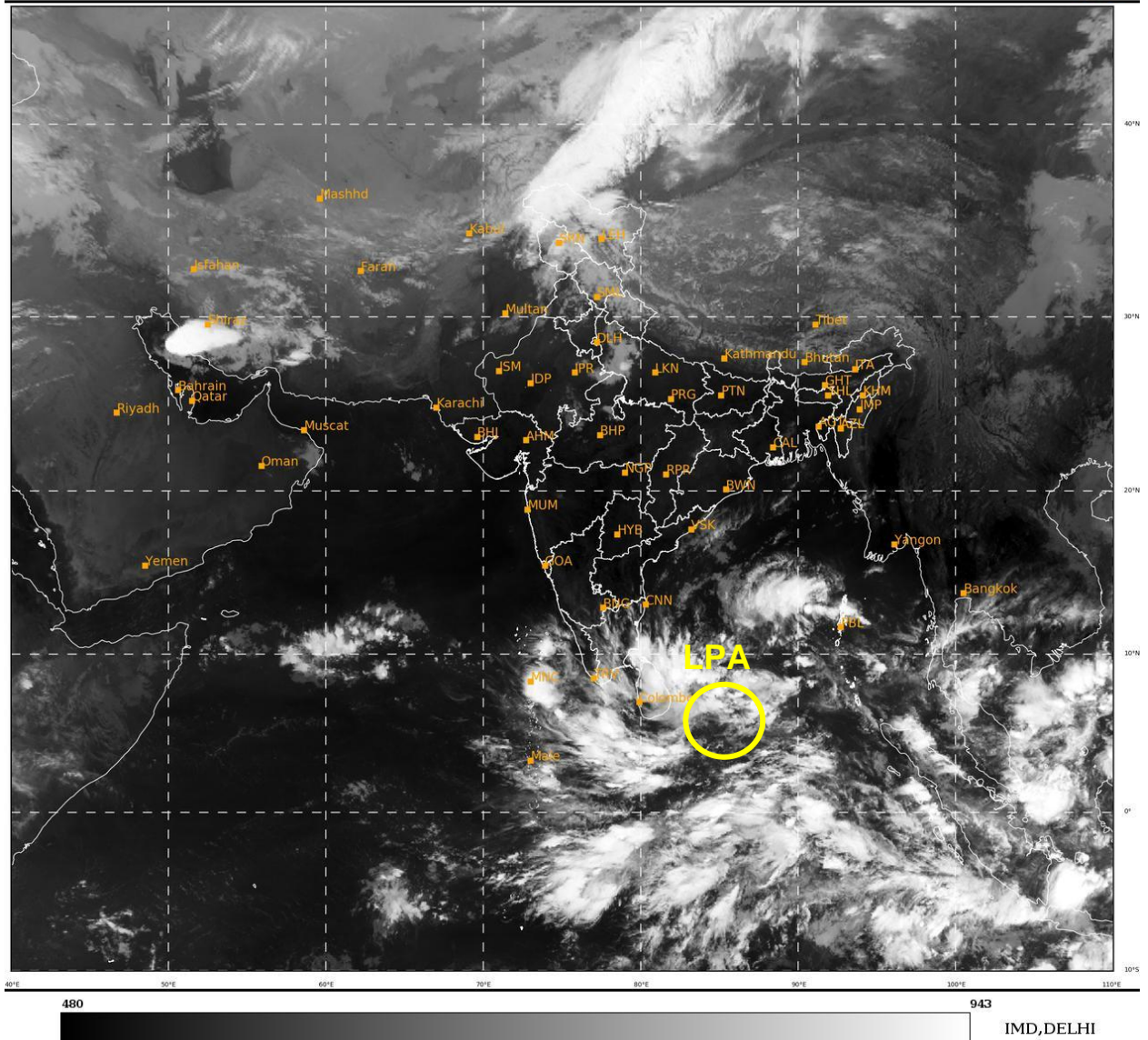
ARABIAN SEA:

SCATTERED LOW AND MEDIUM CLOUDS WITH EMBEDDED INTENSE TO VERY INTENSE CONVECTION LAY OVER SOUTHEAST ARABIAN SEA LAKSHADWEEP ISLANDS AREA AND COMORIN AREA. SCATTERED LOW AND MEDIUM CLOUDS WITH EMBEDDED MODERATE TO INTENSE CONVECTION LAY OVER SOUTH PARTS OF WESTCENTRAL ARABIAN SEA AND SOUTHWEST ARABIAN SEA.

PROBABILITY OF CYCLOGENESIS (FORMATION OF DEPRESSION) DURING NEXT 120 HRS:

24 HOURS	24-48 HOURS	48-72 HOURS	72-96 HOURS	96-120 HOURS
NIL	NIL	NIL	NIL	NIL

REMARKS: NIL



LPA: LOW PRESSURE AREA